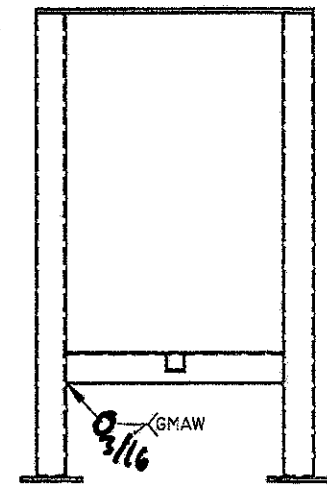
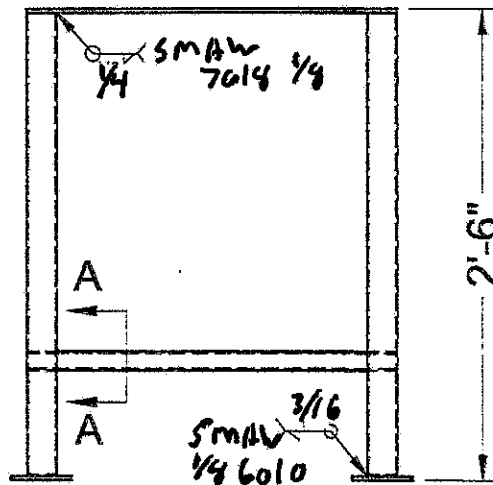
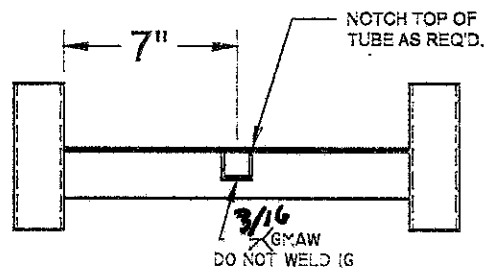
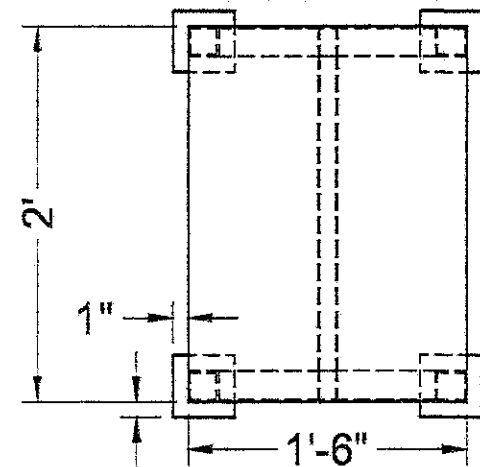


PARTS LIST


| ITEM | QTY. | DESCRIPTION | NOTES |
|------|------|--------------------------------|--------------|
| A | 2 | 2" x 2" ANGLE | |
| B | ONE | 1/4" PLATE STEEL | OXY-FUEL CUT |
| C | 4 | 2" x 2" x 1/8" WALL SQ. TUBING | |
| D | ONE | 1" x 1" x 1/8" WALL SQ. TUBING | |
| E | 4 | 4" x 4" x 1/4" PLATE STEEL | OXY-FUEL CUT |



SECTION A-A
SCALE 1:5

NOTES:

- SUB ASSEMBLY IS PERMITTED
- WELDS CAN BE DONE IN ANY POSITION
- TACK WITH ANY PROCESS, FOLLOW FINAL WELD PROCESS DESIGNATION
- GRIND ALL EDGES SMOOTH, GRIND RADIUS @ EDGE OF TABLE TOP
- NO VISIBLE GRINDING MARKS ON PROJECT OR FINAL WELDS. (POINTS WILL BE DEDUCTED IF VISIBLE)

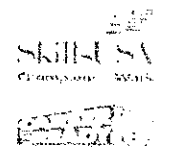


Johnson

SEPLIN UP/ DISTRICT 1

COMPETITION WELDING FABRICATION

| | |
|---------------|------------------|
| DRAWN BY: JAB | DATE: 11/17/2022 |
| SHEET: 1 OF 1 | SCALE: NONE |



Skills USA
TRANSFORMING WELDS